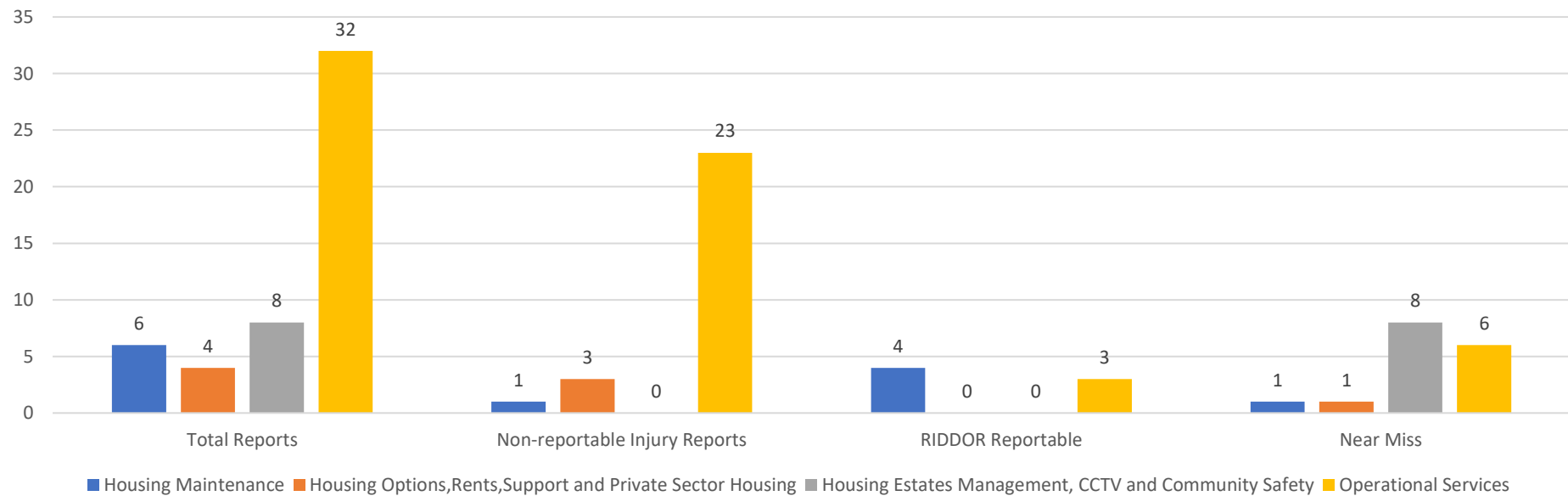


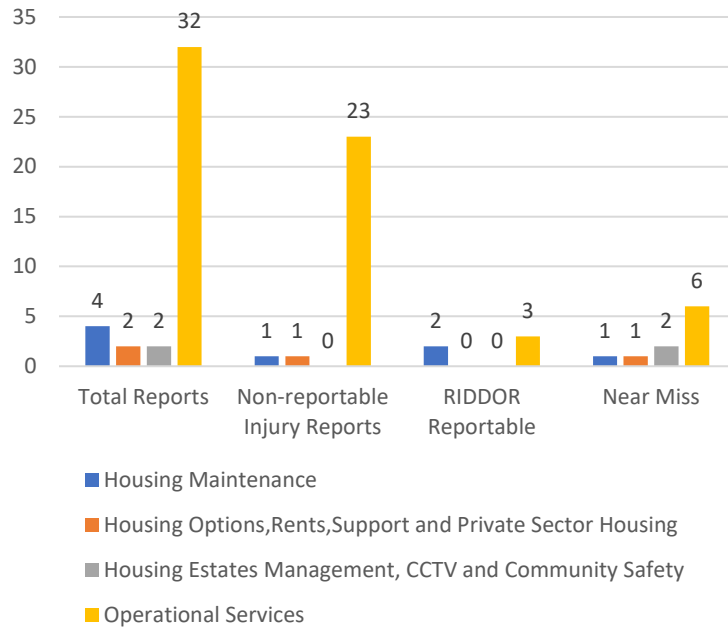
# Corporate Incident and Accident Quarter 2 Report 2021/2022

Accidents and Incidents states taken on 28/10/2021

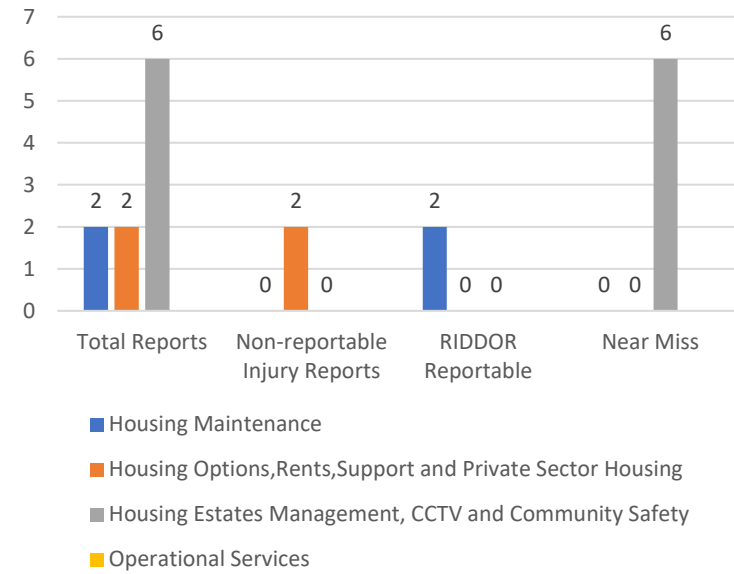
All Incidents and Accidents Q2



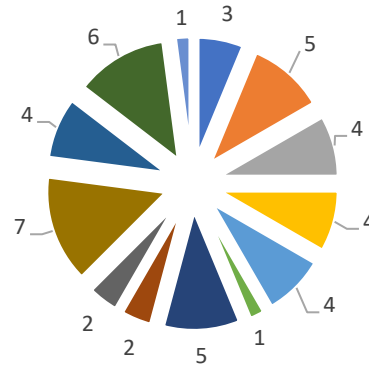
### Employee Incidents and Accidents Q2



### Member of the Public Incidents and Accidents Q2

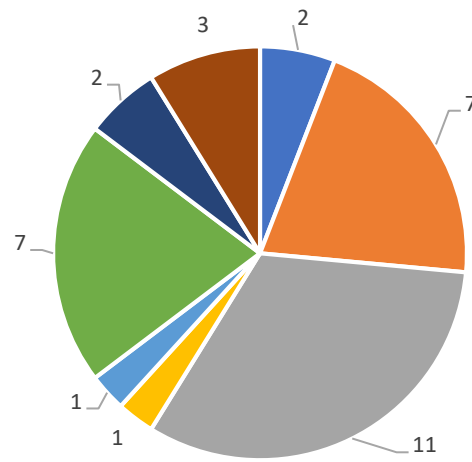


Cause



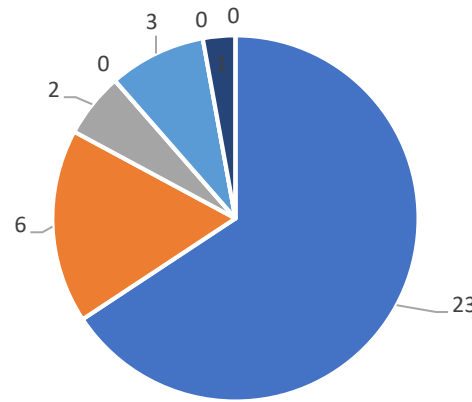
- Abusive/Threatening behaviour
- Contact with harmful substance
- Hit by falling/moving/flying object
- Other (not classified)
- physical assault
- Being exposed to fire or explosion
- Contact with Sharp Object (Syringe, Blade etc.)
- In contact with moving equipment/machinery/vehicle
- Slips/Trips
- Carrying/handling/ lifting
- Fall from Height
- Injured by animal
- Near miss

Injury Type



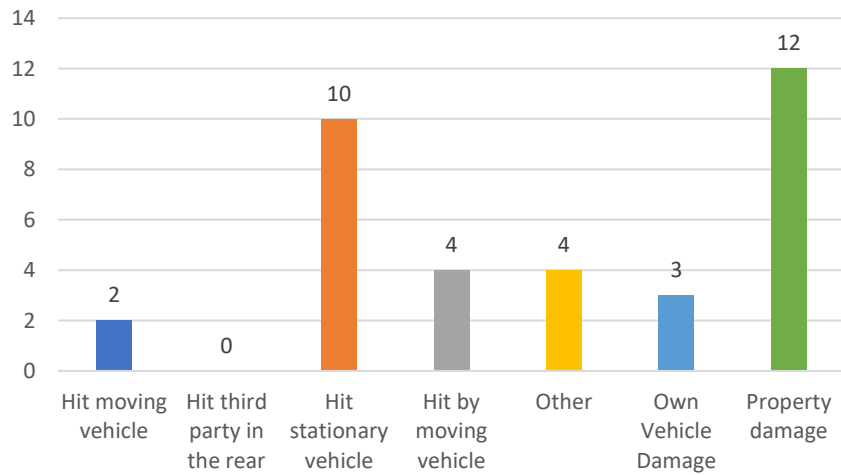
■ Bite ■ Cuts ■ Damage to vehicle or property ■ Fracture ■ Other (Shock etc) ■ Sprains and strains ■ Superficial injuries (bruising etc) ■ Verbal Abuse

### Vehicle Incidents



■ Waste  
 ■ Housing Maintenance  
 ■ Street Scene  
 ■ Engineering Works  
 ■ Open Spaces  
 ■ Transport  
 ■ Parking Enforcement  
 ■ Other

### Category



### Manoeuvre Type

